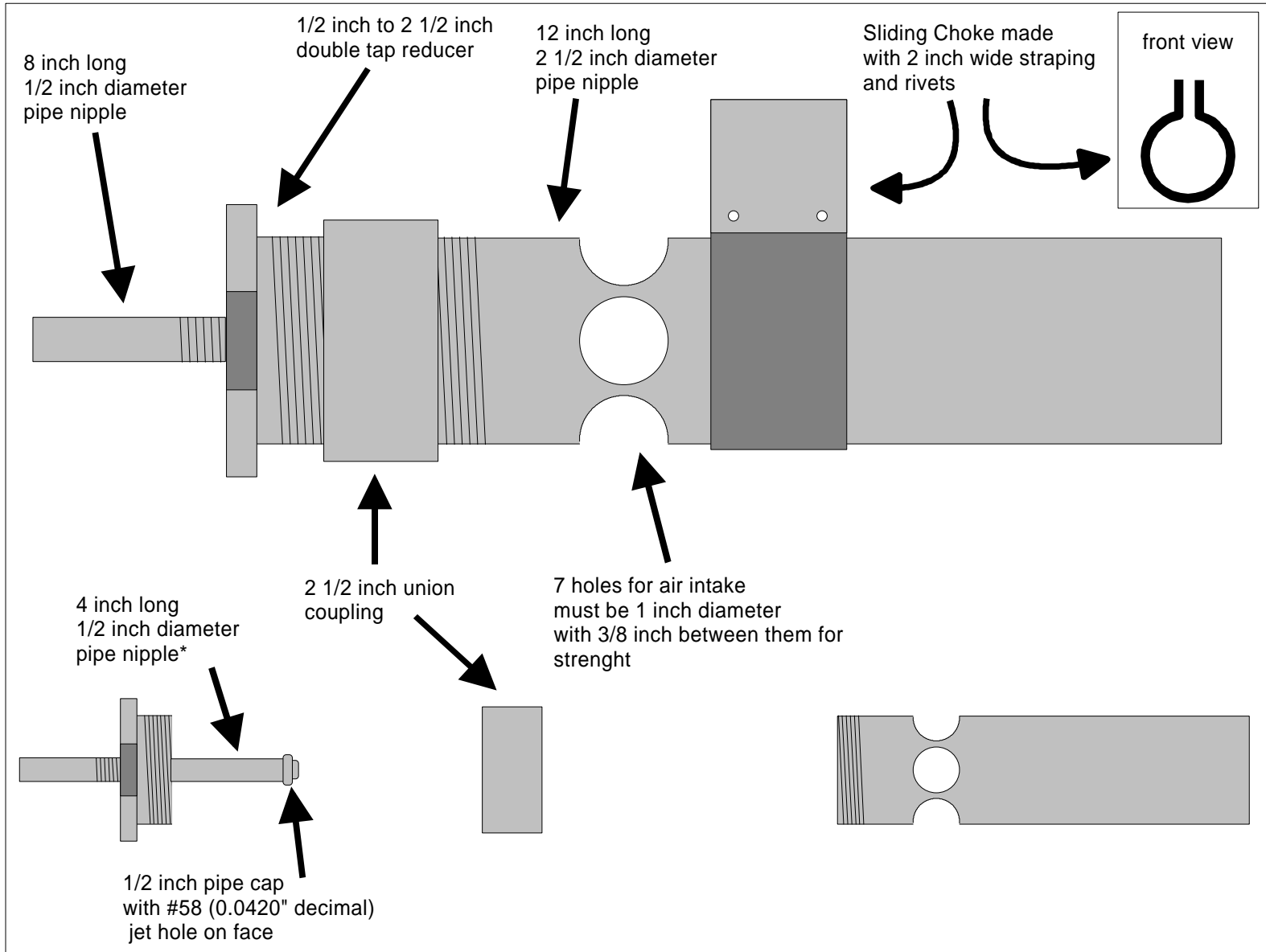


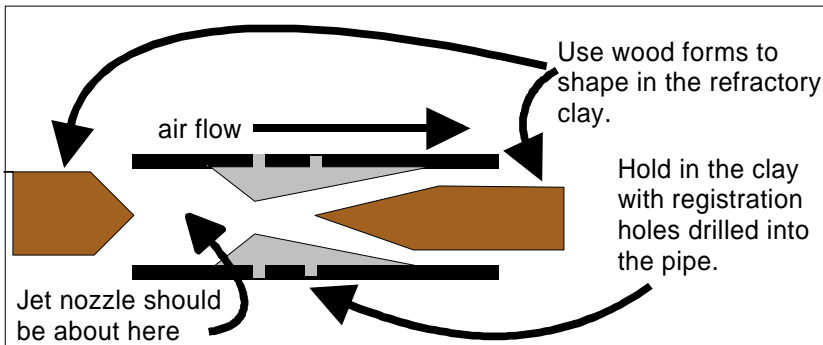
Mongo Burner

Design: Richard Mize (Kentucky)
Modifications and distribution of the plans: Ron Reil (Idaho)

This burner should easily reach a temperature of 2300°F in a ceramic kiln. When the flame is contained within a 2 cubic feet enclosure, the maximum temperature is unknown. Maximum output should be around 500,000 BTU.



Refractory clay venturi (optional, see notice*)



*The lenth of the tube is only an indication. For proper lenth, make sure that the jet is slightly downstream from the air intake holes. If the lenth is well ajusted, the clay venturi might not be needed.

This file may be freely distributed as long as it remains unchanged. The author takes no responsibility for the misuse or any accident involving these plans or the use of the constructed burner. So: BUILD & USE AT YOUR OWN RISK.